



SP-EU

**Social Prescribing to promote and improve access to health and care services
for people in vulnerable situations in Europe**

Horizon Europe – 101155873

D6.2 – Prototype of Digital Tool

WP leader	Dr. Michael Sperber (ACT)
Author(s)	Markus Schlegel (ACT) Sibylle Hasse (ACT)
Version	V1
Due date of delivery	30.09.2025
Actual date of delivery	29.09.2025
Dissemination level	PU

This project has received funding from the European Union's Horizon Europe research and innovation programme under grant agreement No 101155873.

Views and opinions expressed are however those of the author(s) only and do not necessarily reflect those of the European Union or European Health and Digital Executive Agency (HADEA). Neither the European Union nor the granting authorities can be held responsible for them.

Table of Contents

- Table of Contents 2**
- Abbreviations 3**
- List of Figures 4**
- Executive Summary 5**
- 1. Introduction 6**
- 2. Prototype Digital Tool 6**
- 3. Conclusion 8**

Abbreviations

GIS Geographic Information System

List of Figures

Figure 1: Landing Page of the Digital Tool..... 6

Figure 2: Interface of the Digital Tool..... 7

Figure 3: Overlay for adding a new organisation to the tool. 8

Executive Summary

This document provides a comprehensive overview of the fully developed, browser-based Link Working Tool. It outlines the tool's main use cases and functionalities and serves as a reference point for evaluating tool's functionality and design.

Link to tool: <https://sp-eu.active-group.de/>

Github repository: <https://github.com/active-group/sp-eu>

1. Introduction

The tool went online on 31 July 2025 as part of work package 6. The current version is fully functional. However, details may be subject to change as testing by consortium members progresses and brings valuable feedback.

The tool was developed with input from consortium members and associated volunteers, particularly those who had experience in linkworking or adjacent roles. The tool software is written in Clojure and ClojureScript with support by Nix.

Data managed within the tool is processed and stored on secure servers owned by Hetzner Online GmbH, administered by Active Group GmbH. Data access is restricted via Keycloak in compliance with GDPR and internal information security policies. The Linkworking Tool does not process or store any patient data.

2. Prototype Digital Tool

The tool may be accessed via <https://sp-eu.active-group.de/>

The landing page (layout subject to change), as seen in Figure 1, prompts users for a user ID and password, obtainable from ACT via the respective Hubs' contact (to be determined).

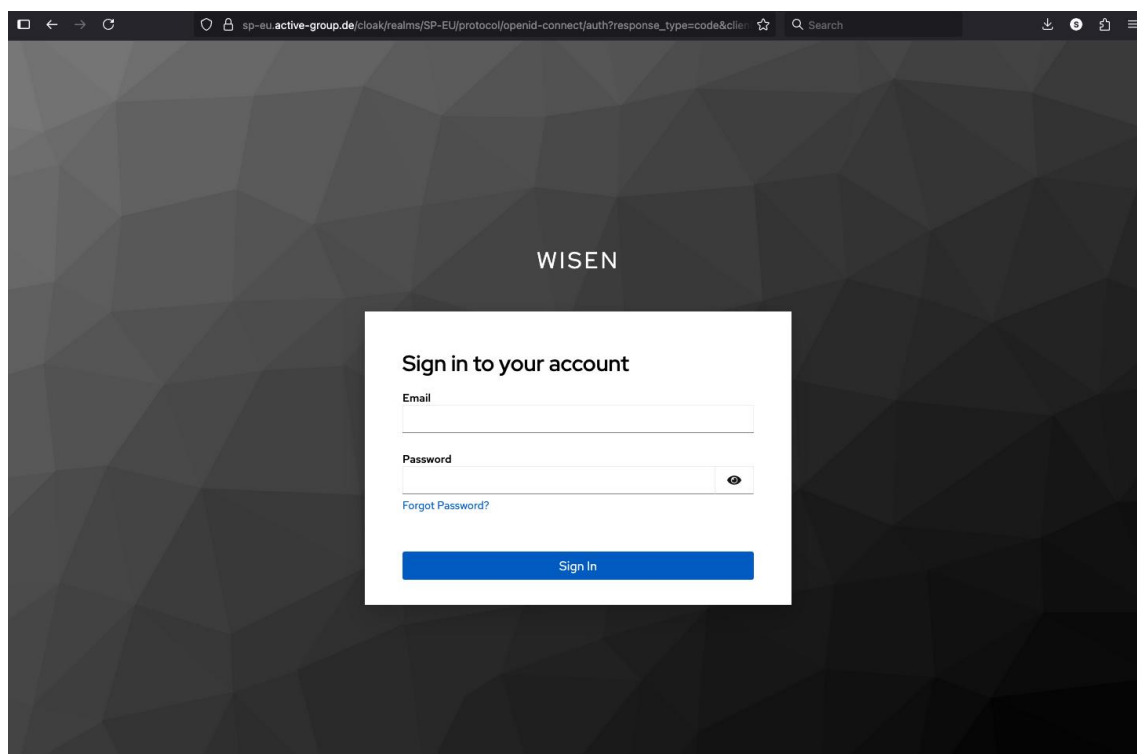


Figure 1: Landing Page of the Digital Tool.

Upon login, as seen in Figure 2, users can access a search interface with a map, as well as options to add new information to the tool.

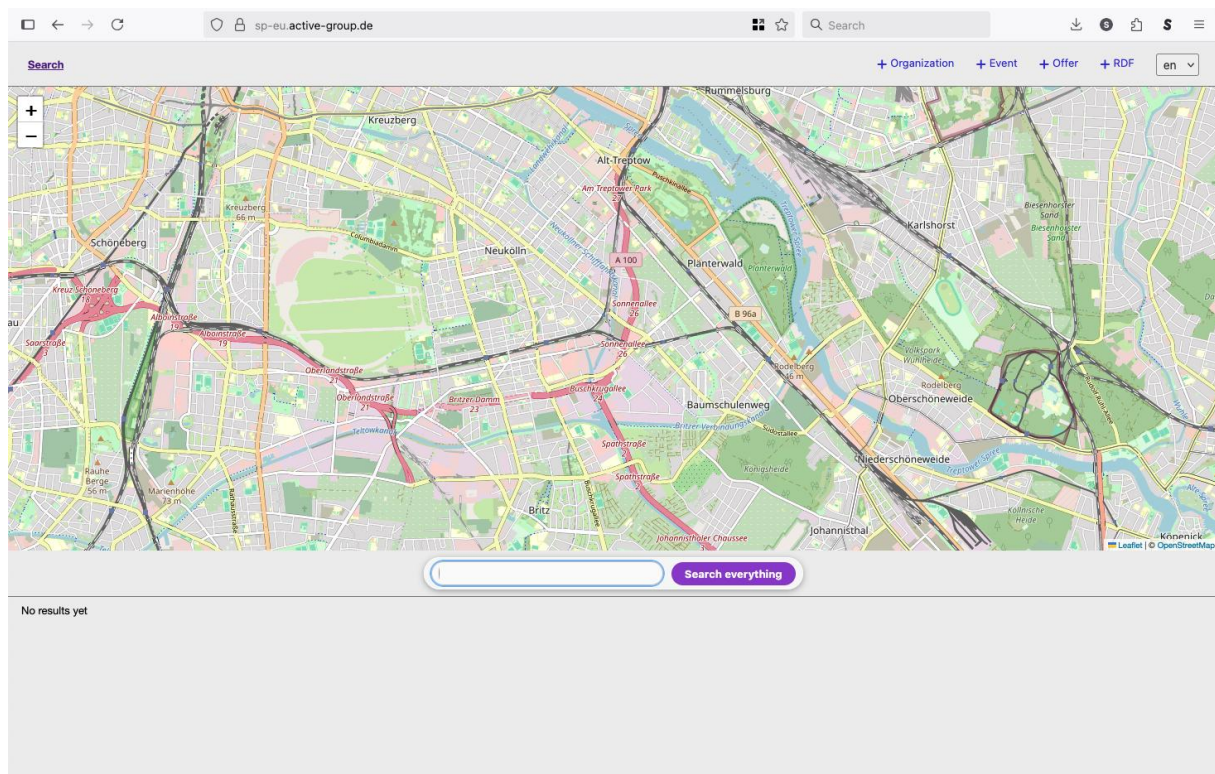


Figure 2: Interface of the Digital Tool.

Note: if a hub has not supplied any information about resources to scrape, the search will come up empty until populated with information by link workers. An option to scrape public GIS sources such as OpenStreetMaps has been implemented as per the requirements, however, the quality of this type of scrape result cannot begin to match the quality of a scrape of curated resources.

Adding an organization or event is done via the respective “+” fields in the top right corner of the screen. Clicking this opens an overlay (Figure 3) through which users can add new entries.

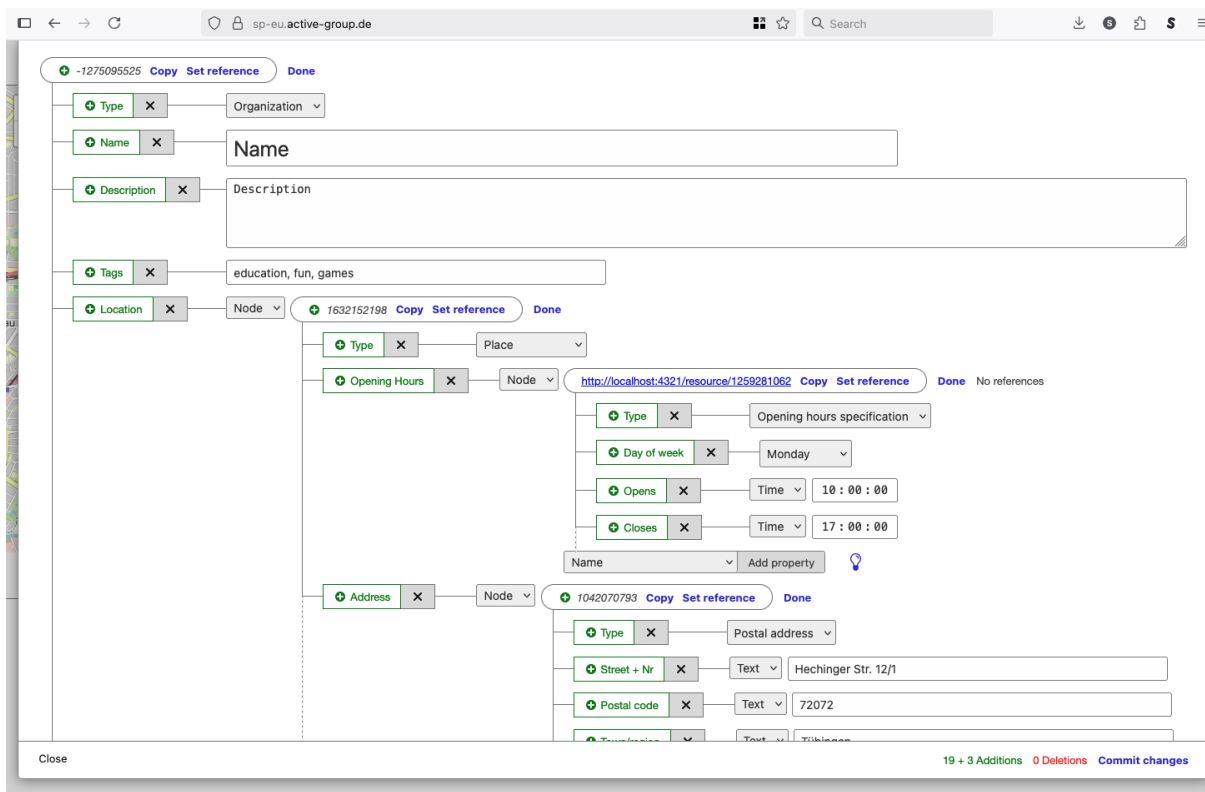


Figure 3: Overlay for adding a new organisation to the tool.

Training materials are in development, and training on how to use the tool will be available from ACT during WP 7.

3. Conclusion

The prototype for the linkworking tool is ready for testing. Volunteers from the consortium will share their feedback.